

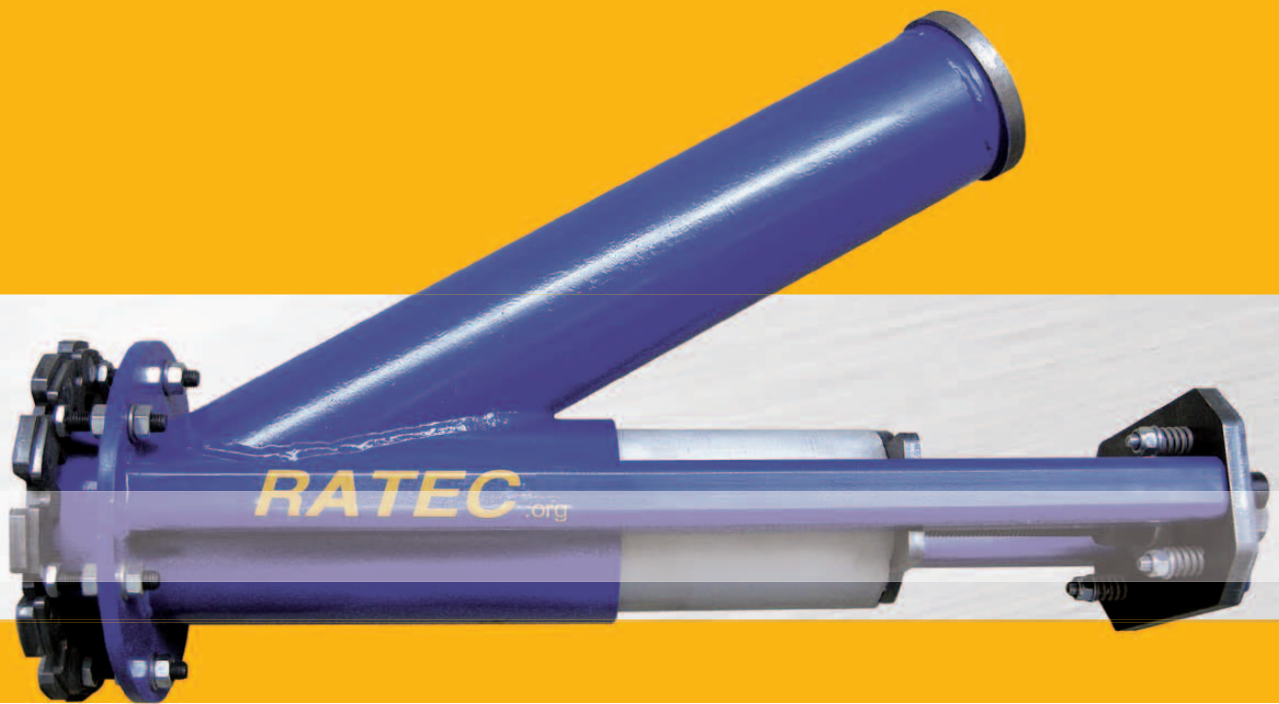


upcrete®
technology

UCI Universal Concrete Inlet

for the Precast Concrete Industry
of the Future.

RATEC
Meet the better ideas!

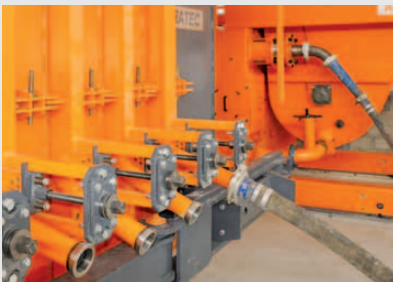


UCI Concrete Inlet

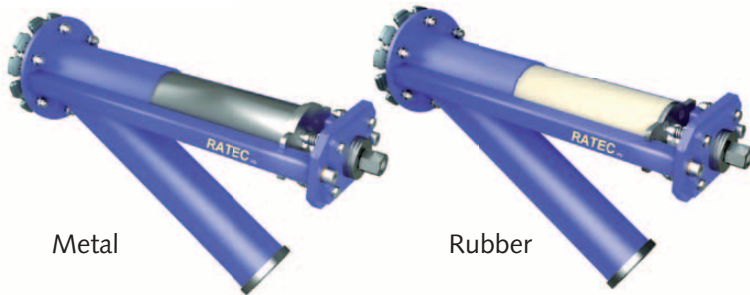
➤ This is how to fill molds. Clean – Quick – Smooth.

Advantages:

- Enables the distributing of concrete with a smooth finish.
 - No touch-up necessary.
 - Clean filling process without left-over concrete.
 - Easy manual or semi-automatic production.
 - Integration into a SPS control unit is possible.
 - No leakage during closing procedure.
 - Easy cleaning procedure.
 - Static limit stops prevent operating error.
 - Assembly on steel and wood molds possible.
 - Part of the upcrete® – System Module – for efficient production of high-quality concrete elements.
- **User-friendly**
The concrete inlet can be operated by a crank or a torque screw driver.
 - **High Quality**
The element comes out of the mold with a smooth surface and requires no touch-up. You will save time and cost.
 - **Durability**
The concrete inlet is easy to clean after concreting. With this easy cleaning procedure, maintenance is greatly reduced.

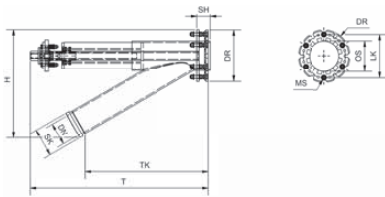


UCI-Basic



Metal

Rubber



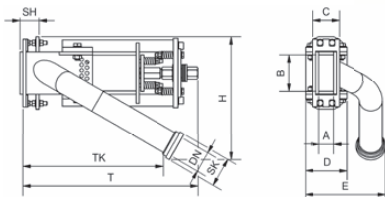
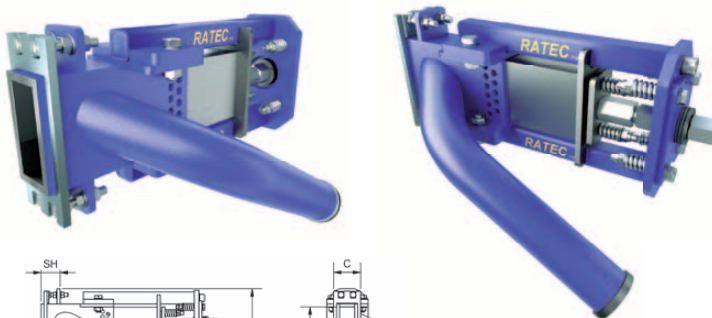
Details:

- barrel closing
- easy cleaning
- easy assembling on the molds
- smooth

➤ Universal Concrete Inlet BASIC

Type Metal	DN
UCI.70	70
UCI.100	100
Type Rubber	DN
UCI.50	50
UCI.70	70
UCI.100	100

UCI-Square



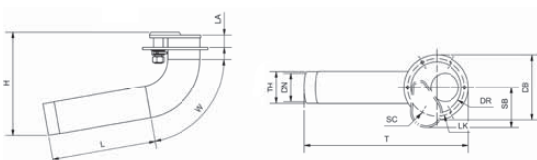
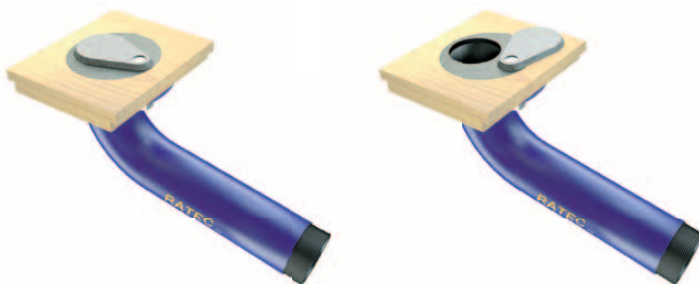
Details:

- barrel closing
- easy cleaning
- easy assembling on the molds
- smooth

➤ Universal Concrete Inlet SQUARE

Type	DN
UCI.120 Square	70

UCI-Compact



Details:

- rotary closing
- easy cleaning
- easy assembling on the mold
- especially for solid and sandwich elements

➤ Universal Concrete Inlet COMPACT

Type	DN
UCI.70 C	70
UCI.100 C	100

➤ UCI - Compact

	UCI.70 C 00003365	UCI.100 C 00003366
DN	70	100
TH	G 2 ½"	G 4"
T	512	580
H	289	364
DB	175	230
SB	100	142
LK	150	204
SC	6,5	10,5
LA	43	43
L	365	365
W	80°	80°

➤ UCI - Square

	UCI.120 SQUARE 00027086
DN	70
SK	SK 3 ¼"
A	50
B	120
C	90
D	140
E	268
SH	63
H	408
TK	466
T	581

➤ UCI - Basic

	Rubber			Metal	
	UCI.50 Basic 00010115	UCI.70 Basic 2 00015444	UCI.100 Basic 2 00014108	UCI.70 Basic 3 00027089	UCI.100 Basic 3 00027088
DN	50	70	100	70	100
SK	thread G 2"	SK 3 ¼"	SK 4 ½"	SK 3 ¼"	SK 4 ½"
TK	349	415	548	415	548
T	501	609	790	609	790
H	311	369	502	369	502
SH	58	60	60	60	60
DR	176	190	230	190	230
LK	140	150	190	150	190
OS	76	90	130	90	130
MS	12,5	12,5	14,5	12,5	14,5

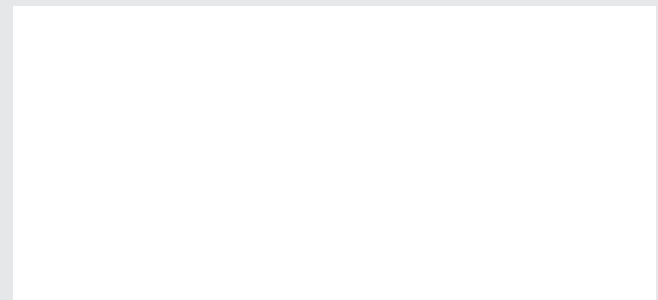
➤ On request special solutions according to your requirements!

RATEC

Meet the better ideas!

Headquarters Germany
RATEC GmbH
 Karlsruher Strasse 32
 D-68766 Hockenheim
 Phone +49-6205-9407-29
 Fax +49-6205-9407-30
 info@ratec.org
 www.ratec.org

Headquarters America
RATEC LLC
 6399 142ND AVE N,
 Clearwater, FL 33760
 Phone +1-727-363-7732
 Fax +1-727-363-7463
 infoUS@ratec.org
 www.ratec.org



www.ratec.org