



# Insert magnets

To make sure your inserts  
are in the right place!



# RATEC insert fixation with integrated magnets

➤ Pioneering, thanks to practice-oriented technology.

RATEC's insert magnets have revolutionized the precast industry. Our patented process offers long term reliability and cost effective solutions for the precast industry. Our products are durable and they last for years under all conditions. With our unique combination of rubber and integrated magnets, you can make almost any shape. Once it's in place, it stays put. No slipping, no sliding.





**agnet**

**➤ RATEC  
Insert Program**



**Anchor plate magnets**

**Magnetic holders for  
anchor channels**

**Threaded Bushing Magnets**

**Transport Anchor Magnets**

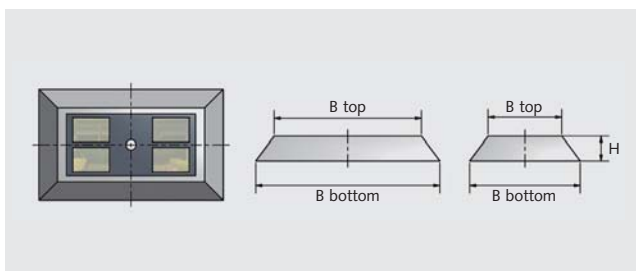
**Pipes**



## ➤ RATEC Anchor plate magnet

### ➤ Anchor plate magnet G (rubber)

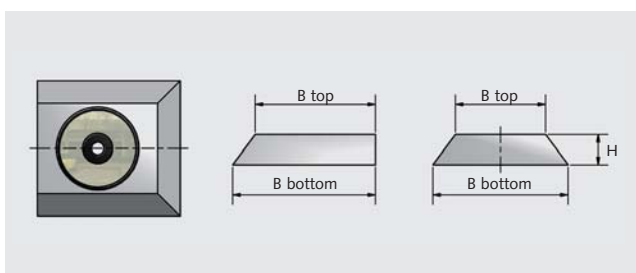
For fixing steel anchor plates.



B bottom x B top x height in mm	Art. No.
46/132 x 37/124 x 9	06977
90/200 x 80/190 x 9	05203
110/110 x 100/100 x 7	06036
120/60 x 115/55 x 7	05193
120/120 x 100/100 x 20	12325
120/145 x 100/105 x 35	07483
150/90 x 120/60 x 20	08284
160/160 x 120/120 x 20	06861
160/190 x 120/150 x 30	08287
170/125 x 100/105 x 35	04655
180/140 x 160/120 x 10	11915
190/130 x 160/100 x 20	08286
250/220 x 200/170 x 25	06859
290/150 x 260/120 x 15	06862
460/230 x 400/170 x 30	06860

### ➤ Anchor plate magnet G (rubber)

For fixing steel anchor plates.

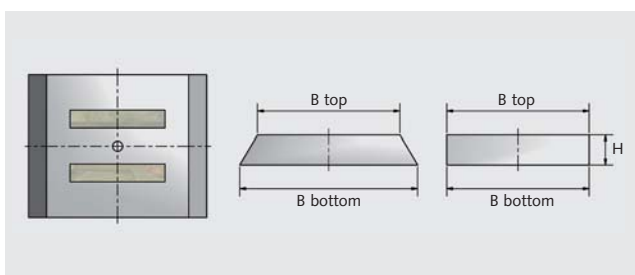


B bottom x B top x height in mm	Art. No.
95/90 x 80/60 x 20	08285
100/100 x 90/80 x 20	07421
115/170 x 100/105 x 35	04149
120/140 x 100/100 x 20	11914
120/160 x 90/100 x 20	12286
120/240 x 100/200 x 80	12287
130/85 x 80/60 x 20	08281
130/85 x 80/60 x 40	08282
150/74 x 100/74 x 10	12284
150/105 x 120/90 x 25	08401
150/150 x 110/130 x 20	11527
210/140 x 200/120 x 10	06826

## ➤ RATEC Anchor plate magnet and magnetic holders for anchor channel

### ➤ Anchor plate magnet G (rubber)

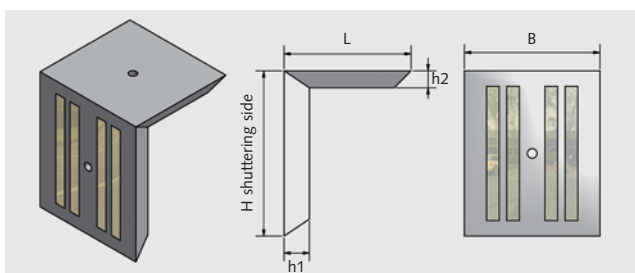
For fixing steel anchor plates.



B bottom x B top x height in mm	Art. No.
50/150 x 35/150 x 40	06640
120/74 x 100/74 x 10	12285
130/100 x 100/100 x 16	11815
130/110 x 100/110 x 15	10129
150/120 x 120/120 x 25	08400

### ➤ Magnet Holder Edge S (Steel)

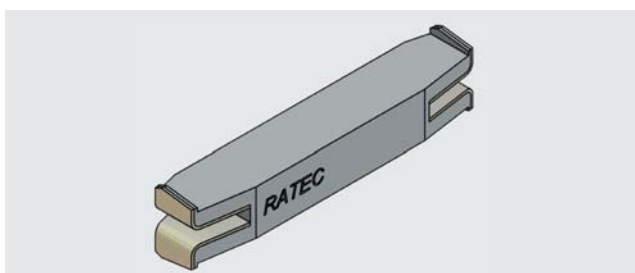
For fixing steel anchor plates.



H x L x B x h1 x h2 in mm	Art. No.
155 x 270 x 150 x 15 x 15	12448
155 x 115 x 50 x 10 x 10	11936
195 x 150 x 150 x 30 x 20	00838
195 x 80 x 140 x 10 x 20	00837

### ➤ Anchor Channel G (Rubber)

Magnet fixing for simple snapping in anchor channel HTA/HZA.



Recommendation:

After looking into the HTA a small adhesive tape is to adhere about the HTA and magnet.

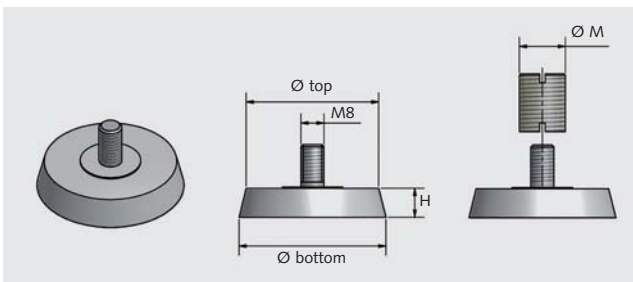
Then no concrete mash can flow into the HTA and the magnet can be removed really easy.

Description	Art. No.
HTA 25/15	05153
HTA 27/15	01133
HTA 28/15	01562
HTA 28/20	03856
HTA 36/20	02510
HTA 38/17	00571
HTA 40/22	01412
HTA 40/25	07359
HTA 49/30	04824
HTA 50/30	02511
HTA 52/34	01144
HTA 72/48	05009
HTA 41/22	02509

## ➤ RATEC Threaded bushing magnet

### ➤ Basic Threaded Bushing Magnet (Rubber)

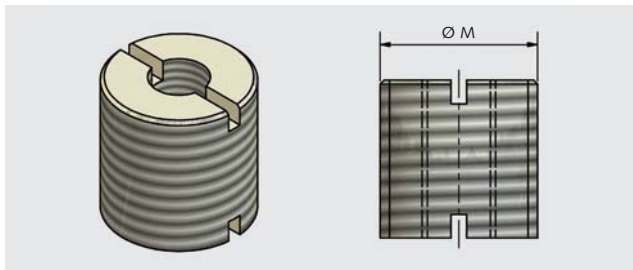
With hex socket M8 to pick up steel thread support M10 to M36.



Ø top x Ø bottom x h in mm	Art. No.
46 x 50 x 10	06739
50 x 60 x 10	00898
54 x 58 x 12	05434
57 x 69 x 23	04836
64 x 69 x 10	06616
64 x 69 x 12	05422

### ➤ Steel thread support

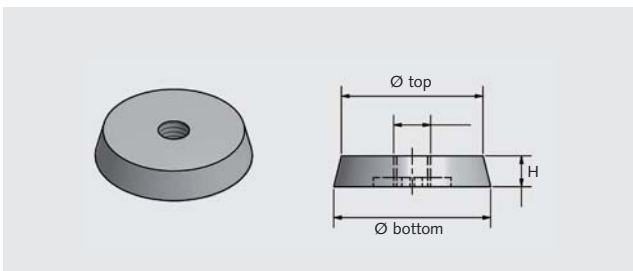
With internal thread M8 for basic threaded bushing magnet.



Thread diameter Ø in mm	Art. No.
M 10	04835
M 12	04837
M 14	04838
M 16	04839
M 18	04840
M 20	04841
M 24	04842
M 30	04843
M 32	06588
M 36	05097

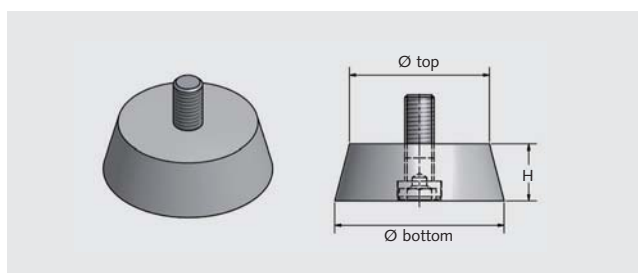
### ➤ Threaded Bushing Magnet

With different thread.



Ø top x Ø bottom x h in mm	Thread diameter Ø in mm	Art. No.
35 x 35 x 15	M 5	05012
46 x 51 x 10	M 5	01460
29 x 42 x 12	M 8	08970
45 x 50 x 10	M 8	01068
46 x 51 x 10	M 8	02398
50 x 64 x 31	M 8	01376
50 x 56 x 30	M 8	06354
64 x 69 x 10	M 8	00603
70 x 85 x 30	M 8	08738
46 x 51 x 10	M 12	04908
64 x 69 x 10	M 12	07541
90 x 95 x 9	M 12	11656
35 x 55 x 10	M 14	08058
95 x 120 x 62	M 16	07342

## ➤ RATEC Threaded bushing magnet

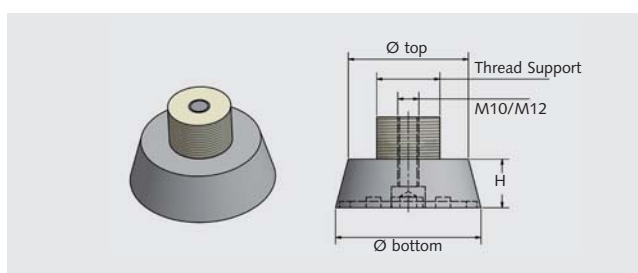


### ➤ Threaded Bushing Magnet G (Rubber)

With fixed thread.

Dimension in mm (Ø top x Ø bottom x h)

Thread Diameter Ø	Dimension: 50 x 60 x 10	Dimension: 64 x 69 x 10	Dimension: 29 x 42 x 12	Dimension: 64 x 69 x 12	Dimension: 57 x 69 x 23
M 8	Art. No. 00898	Art. No. 02906	Art. No. 02616	Art. No. 02621	Art. No. 04836
M 10	Art. No. 02629	Art. No. 02441	Art. No. 04709	Art. No. 02088	Art. No. 03173
M 12	Art. No. 12235	Art. No. 02442	Art. No. 11730	Art. No. 02622	Art. No. 04857
M 16	Art. No. 08195	Art. No. 02885	Art. No. 04728	Art. No. 02087	Art. No. 00208
M 18	Art. No. 02630	Art. No. 02880	Art. No. 02618	Art. No. 02623	Art. No. 04724
M 20	Art. No. 02631	Art. No. 02443	Art. No. 04729	Art. No. 02624	Art. No. 00230
M 24	Art. No. 02228	Art. No. 03169	Art. No. 04730	Art. No. 02625	Art. No. 00384
M 30	Art. No. 02632	Art. No. 03170	Art. No. 02619	Art. No. 02626	Art. No. 00491
M 36	Art. No. 02633	Art. No. 02889	Art. No. 02620	Art. No. 02627	Art. No. 03456



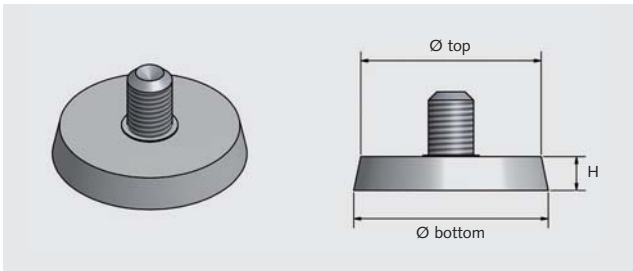
### ➤ Threaded Bushing Magnet S (Steel)

Thread support welded on allen screw.

Dimension in mm (Ø top x Ø bottom x h)

Thread Support	Dimension: 50 x 54 x 15 (welded on M10)	Dimension: 65 x 69 x 15 (welded on M12)	Dimension: 80 x 85 x 15 (welded on M12)	Dimension: 95 x 100 x 15 (welded on M12)
M 10	Art. No. 01791	Art. No. 01802	Art. No. 01812	Art. No. 01826
M 12	Art. No. 01793	Art. No. 01803	Art. No. 01813	Art. No. 01827
M 16	Art. No. 01795	Art. No. 01805	Art. No. 01814	Art. No. 01828
M 18	Art. No. 01796	Art. No. 01806	Art. No. 01817	Art. No. 01829
M 20	Art. No. 01797	Art. No. 01807	Art. No. 01821	Art. No. 01830
M 24	Art. No. 01798	Art. No. 01808	Art. No. 01822	Art. No. 01831
M 30	Art. No. 01799	Art. No. 01809	Art. No. 01823	Art. No. 01832
M 36	Art. No. 01800	Art. No. 01810	Art. No. 01824	Art. No. 01833

## ➤ RATEC Threaded bushing magnet

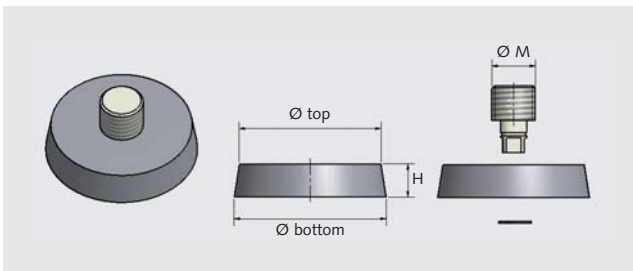


### ➤ Threaded Bushing Magnet S (Steel)

With fixed threaded pin.

Dimension in mm ( $\varnothing$  top x  $\varnothing$  bottom x h)

Thread Diameter $\varnothing$	Dimension: 50 x 54 x 15	Dimension: 65 x 69 x 15	Dimension: 80 x 85 x 15	Dimension: 95 x 100 x 15
M 10	Art. No. 01883	Art. No. 01893	Art. No. 01934	Art. No. 01944
M 12	Art. No. 01884	Art. No. 01894	Art. No. 01936	Art. No. 01945
M 16	Art. No. 01886	Art. No. 01896	Art. No. 01938	Art. No. 01948
M 18	Art. No. 01887	Art. No. 01897	Art. No. 01939	Art. No. 01949
M 20	Art. No. 01888	Art. No. 01898	Art. No. 01940	Art. No. 01950
M 24	Art. No. 01889	Art. No. 01899	Art. No. 01941	Art. No. 01951
M 30	Art. No. 01890	Art. No. 01910	Art. No. 01942	Art. No. 01952



### ➤ Threaded Bushing Magnet S (Steel)

With changeable thread adapter incl.

Seeger ring and square drive.

Dimension in mm ( $\varnothing$  top x  $\varnothing$  bottom x h)

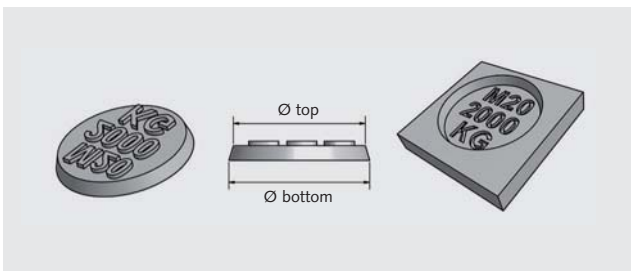
Thread Diameter $\varnothing$	Dimension: 50 x 54 x 15	Dimension: 65 x 69 x 15	Dimension: 80 x 85 x 15	Dimension: 95 x 100 x 15
M 10	Art. No. 01835	Art. No. 01844	Art. No. 01853	Art. No. 01862
M 12	Art. No. 01836	Art. No. 01845	Art. No. 01854	Art. No. 01874
M 16	Art. No. 01838	Art. No. 01847	Art. No. 01855	Art. No. 01875
M 18	Art. No. 01839	Art. No. 01848	Art. No. 01856	Art. No. 01876
M 20	Art. No. 01840	Art. No. 01849	Art. No. 01857	Art. No. 01877
M 24	Art. No. 01841	Art. No. 01850	Art. No. 01858	Art. No. 01878
M 30	Art. No. 01842	Art. No. 01851	Art. No. 01859	Art. No. 01879
M 36	Art. No. 01843	Art. No. 01852	Art. No. 01860	Art. No. 01880



## ➤ RATEC Threaded bushing magnet

### ➤ Round Magnets (Rubber) G

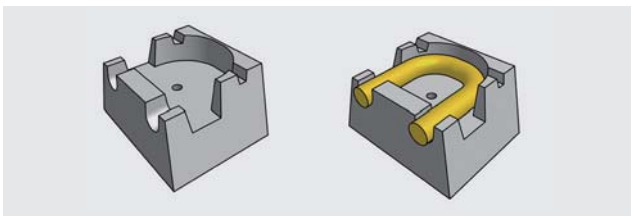
For marking loads (threaded brush) at the concrete.



Description	Art. No.
1.200 kg/M20	06832
2.000 kg/M20	11644
1.800 kg/M24	07027
3.600 kg/M30	07028

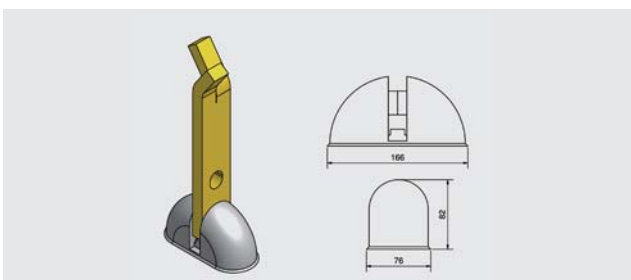
## ➤ RATEC Transport Anchor magnets

### ➤ Magnet Holder For Lift Off Loop e.g. walls



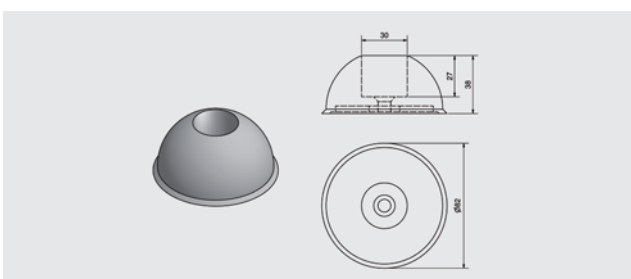
Description	Art. No.
Magnet holder for lift off loop	10130

### ➤ Transport Anchor Magnets (delivery without lift off anchor)



Description	Art. No.
Transport anchor magnet 2,5 t	02997
Transport anchor magnet 5,0 t	02998
Transport anchor magnet 10,0 t	02617

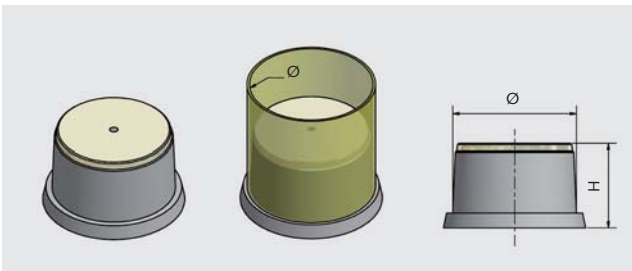
### ➤ Swift Lift Magnets



Description	Art. No.
Swift Lift Magnets for 1,3 t	04967
Swift Lift Magnets for 2,5 t	01041
Swift Lift Magnets for 5,0 t	01042
Swift Lift Magnets for 7,5 t	01561
Swift Lift Magnets for 10,0 t	03706

### ➤ Magnet Holder For Grouting Tube G (Rubber)

For fixing columns, binder, special beam, TT-wall and wall.

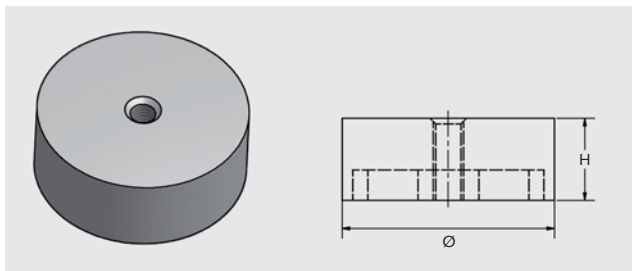


Further sizes on request!  
Or visit our homepage: [www.ratec.org](http://www.ratec.org)

Ø x H in mm	Art. No.
27 x 30	12528
37 x 70	12444
50 x 62	06757
50 x 64	02096
54 x 48	12453
65 x 57	02097
69 x 58	07085
80 x 62	01979
100 x 68	11846

### ➤ Pipe Magnet G (Rubber)

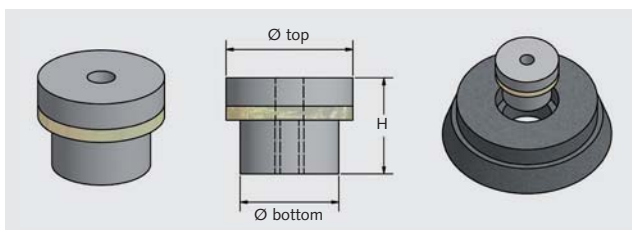
For fixing pipes at columns, binder, special beam, TT-slabs and walls.  
Special sizes available on request!



Ø x H in mm	Adhesive force in kg	Art. No.
50 x 15	120	06879
70 x 27	200	07710
100 x 27	350	03258
114 x 27	700	00236

### ➤ Universal Recess Magnet G (Rubber)

for recess and empty conduit.  
Can be used for different production process.



H x Ø top x Ø bottom in mm	Art. No.
30 x 45 x 35	00394
30 x 70 x 55	00386

### ➤ Plastic Plate PE

for universal magnet Art. No. 00394, 00386.  
Our universal magnets can be used for different production process. Special size of plastic plate available on request.

Ø in mm	Art. No.
Ø = 75	12523
Ø = 103	07096
Ø = 119	07095
Ø = 152	07097
Ø = 200	07995



➤ Our program offers several different possibilities for solutions, but we are not able to show them all in this prospect. Please send us your requirements, types or drawings. We surely have a solution for you.



## ➤ RATEC program



➤ Shuttering magnets



➤ Shuttering systems



➤ RATEC Battery System



➤ Inserts & Insert Magnets



➤ Special shuttering



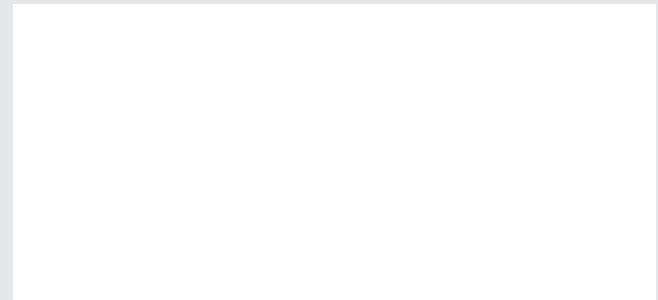
➤ Upcrete® Pump Station

# **RATEC**

*Meet the better ideas!*

Headquarters Germany  
**RATEC GmbH**  
Karlsruher Strasse 32  
D-68766 Hockenheim  
Phone +49-6205-9407-29  
Fax +49-6205-9407-30  
info@ratec.org  
www.ratec.org

Headquarters America  
**RATEC LLC**  
6003 126th Ave North  
Clearwater, FL 33760  
Phone +1-727-363-7732  
Fax +1-727-363-7463  
infoUS@ratec.org  
www.ratec.org



[www.ratec.org](http://www.ratec.org)